

PINE GROVE CEMETERY ASSOCIATION

2023 Plan for Additional Burial Space

October 2023

PINE GROVE CEMETERY ASSOCIATION

2023 Plan for Additional Burial Space

This 2018 Plan for Additional Burial Space in Pine Grove Cemetery on Bow Wow Road in Sheffield, MA (the “Cemetery”), approved by the Trustees of Pine Grove Cemetery Association (the “Association”) at its meeting on March 23, 2018, and amended in October 2023.

This Plan incorporates, amends, and restates the 2017 Plan for Additional Burial Space regarding areas the eight Cemetery sections for casket and urn burials and one additional area, the Memorial Garden, for urn burials:

- Gate Section
- Field Section
- Section 18
- Southeast Section
- Southeast-East Section
- Cypress Section
- East Section
- Northeast Section
- Memorial Garden

Existing burial deeds for areas in the Cemetery outside the new burial areas remain in full force and effect as originally executed prior to the approval of this Plan.

- I. General
- II. Burial Areas
- III. Financial Issues

I. General

1. *Maps Document.* This Plan incorporates a separate document titled *Maps for 2017 Plan for Additional Burial Space* (the “Maps Document”). The names of the new burial areas and the references to specific burial plots/spaces are used in this Plan as set forth in the Maps Document.
2. *Reasonable Efforts to Confirm No Prior Burials.* The Association has used reasonable efforts to confirm that the new Burial Sections and the Memorial Garden have not been previously used for burials, but certainty is not possible on this issue. If, during the course of the preparation of any grave, the grave digger determines that the relevant plot has been previously used for burial, the old grave shall be closed and a new plot shall be selected for the new grave in consultation with the Trustees and the family of the deceased.

3. *Standard Burial Plots.* Each standard burial plot in the new Burial Sections measures five feet by eleven feet (5' x 11'), with the eleven feet length running north to south and the five feet width running east to west (a "Standard Burial Plot"); *provided* that (a) the size of the plots in the Field Section (the "Field Section Plots") are larger as indicated in the map of the Field Section in the Maps Document and (b) some Sections also have plots of irregular dimensions as described below and in the Maps Document. Plots of irregular dimensions are subject to the same restrictions as Standard Burial Plots unless otherwise specified at the time of purchase of burial rights in such plots.
4. *Capacity of Standard Burial Plots.* Each Standard Burial Plot in the new Burial Sections may be used to bury the remains of not more than six persons as follows:
 - a. one casket holding the remains of one person and two urns, each holding the cremated remains of one person, or
 - b. six urns, each holding the cremated remains of one person; *provided* that the capacity of plots SE-2, SE-3, SE-4, SE-6, SE-7, SE-8, SE-10, and SE-14 is set forth in the original 2015 Plan for Additional Burial Space under which burial rights in such plots were purchased.

provided that if a purchaser shall acquire two Standard Burial Plots which adjoin each other in an east-west direction, three caskets and four urns shall be permitted in such two adjoining Standard Burial Plots.

5. *Monuments and Gravestones.* In order to provide reasonable space between monuments or gravestones in adjoining burial plots in all new Burial Sections and to avoid visual encroachment of the monuments in one burial plot on an adjoining plot:
 - a. Upright monuments and headstones may be erected only upon prior written approval of the Association. Foundation support for the same must extend below the frost-line. All monuments shall be (i) white or gray marble, (ii) natural gray granite, or (iii) slate.
 - b. One larger monument may be erected in a Standard Burial Plot or Field Section Plot, *provided* that:
 - (i) the base or footprint of such monument does not exceed twenty percent (20%) of the area of such plot, and
 - (ii) if a purchaser acquires burial rights in adjoining plots, the base or footprint of a single larger monument for such adjoining plots shall not exceed twenty percent (20%) of the combined area of such adjoining plots.
 - c. One grave marker may be erected in any Standard Burial Plot or Field

Section Plot for each person buried or entitled to be buried in such plot.

- d. No monument or memorial marker may be closer than one foot (1') to the boundary of a Standard Burial Plot or Field Section Plot.

The Trustees may grant exceptions to these guidelines on a case-by-case basis.

6. *Provisions for Plots of Irregular Dimensions.* The capacity, price, and permitted monuments and gravestones in plots of irregular dimensions, *i.e.*, other than a Standard Burial Plot or a Field Section Plot, will be specified by the Trustees of the Association at the time of sale of burial rights in any such plot.

7. *Burial Deeds.* The burial deeds for each burial plot will be substantially in the form attached hereto and name or designate the individual(s) who has (have) the right to burial in such plot up to the maximum number of persons permitted for such plot. Such naming or designation may be made by the purchaser in his/her discretion as illustrated below:

a. _____,
_____,
_____, and

b. _____,
_____,
their descendants, and
a spouse of each descendant
up to a maximum of _____ person(s)

c. _____,
_____,
their descendants, and
a spouse of each descendant or
an unmarried partner designated by a descendant
up to a maximum of _____ person(s)

d. _____,
_____,
their descendants, and
the loved ones designated by any descendant
up to a maximum of _____ person(s)

The word “descendant” includes an “adopted child” in any generation.

8. *No Perpetual Care.* The Cemetery does not provide perpetual care, and the burial deeds shall so state.
9. *Governing Documents.* This 2023 Plan for Additional Burial Space, the Burial Procedures of the Association, the Rules and Regulations of the Association, and the By- laws of the Association, all as amended and in effect from time to time, shall apply to the maintenance and use of burial plots in the new Burial Sections and the Memorial Garden and the rights of members in the Association.
10. *Required Approval of Trustees.* All purchases of burial rights will be subject to approval by the Trustees of the Association, and the Trustees have discretion to determine the order of sale of burial plots.
11. *Restrictions on Sale.* Burial rights in certain plots in the Field Section, the Cypress Section, the East Section, the Northeast Section, and the Memorial Garden may not be sold unless the Trustees of the Association authorize such sales. These plots are identified in paragraphs 21, 30, 33, 36, and 44 below.
12. *Cornerstones for Burial Sections.* Cornerstones may in the future be placed by the Association outside the corners of each new Burial Section in order to mark the corners of such Section.
13. *Cornerstones for Burial Plots.* Upon the purchase of burial rights in a Burial Section, cornerstones measuring six inches by six inches by six inches will be installed inside the four corners of the relevant burial plot (or inside the four corners of a combination of burial plots if a family acquires multiple plots) under the supervision of the Cemetery and at the cost of the purchaser of burial rights in such plot(s). Such cornerstones will display the first letter of the family name of the individuals with burial rights. All cornerstones shall be flush to the ground.
14. *Existing Burial Deeds.* Existing burial deeds for areas in the Cemetery outside the new burial areas remain in full force and effect as originally executed prior to the approval of this Plan.
15. *Amendment of Plan.* This Plan may be amended from time to time by the Trustees of the Association.

II. Burial Areas

Gate Section

16. *Four Standard Burial Plots.* The Gate Section is divided into four (4) Standard Burial Plots.
17. *Lettering.* Lettering on memorial monuments in the Gate Section shall face north.

Field Section

18. Eighteen Field Section Plots. The Field Section is divided into eighteen (18) Field Section Plots of different sizes as indicated in the Maps Document.
19. Capacity of Field Section Plots. Each Field Section Plot may be used to bury the remains of not more than ten persons as follows:
 - a. two caskets, each holding the remains of one person and four urns, each holding the cremated remains of one person, or
 - b. one casket holding the remains of one person and eight urns, each holding the cremated remains of one person, or
 - c. ten urns, each holding the cremated remains of one person.
20. *Lettering.* Lettering on memorial monuments in the Field Section shall face north.

Section 18

22. *Eight Standard Burial Plots.* Section 18 is divided into eight (8) Standard Burial Plots.
23. *Lettering.* Lettering on memorial monuments in Section 18 shall face north.

Southeast Section

24. *Sixteen Standard Burial Plots.* The Southeast Section is divided into sixteen (16) Standard Burial Plots.
25. *Lettering.* Lettering on memorial monuments in the Southeast Section shall face north.

Southeast-East Section

26. *Thirteen Standard Burial Plots.* The Southeast-East Section is divided into thirteen (13) Standard Burial Plots and six (6) burial plots of irregular dimension.

27. *Lettering.* Lettering on memorial monuments in the Southeast-East Section shall face north.

Cypress Section

28. *Six Standard Burial Plots.* The Cypress Section is divided into six (6) Standard Burial Plots and two (2) burial plots of irregular dimension.
29. *Lettering.* Lettering on memorial monuments in the Cypress Section shall face south.

East Section

30. *Thirty-one Standard Burial Plots.* The East Section is divided into thirty-one (31) Standard Burial Plots and eight (8) burial plots of irregular dimension.
31. *Lettering.* Lettering on memorial monuments in the East Section shall face south.
32. *Restrictions on Sale.* Burial rights in plots E-2, E-6, E-11, E-16, E-21, E-26, E-31, and E-36 may not be sold without authorization by the Trustees of the Association.

Northeast Section

33. *Twenty-Six Standard Burial Plots.* The Northeast Section is divided into twenty-six (26) Standard Burial Plots and fifteen (15) burial plots of irregular dimension.
34. *Lettering.* Lettering on memorial monuments in the Northeast Section shall face south.

Memorial Garden

35. *The Memorial Garden.* An area measuring 36 feet by 36 feet on the east side of the Cemetery is allocated to the Memorial Garden as set forth in the Maps Document.
36. *Memorial Garden Plots.* The Memorial Garden is divided into 84 memorial garden plots, each measuring four feet by three feet (4' x 3'), with the long measurement running east to west and the short measurement running north to south.
37. *Capacity of Memorial Garden Plots.* Each memorial garden plot may be used to bury two urns, each holding the cremated remains of one person.

38. *No Vertical Tombstones or Cornerstones.* There will be no vertical tombstones or cornerstones in memorial garden plots.
39. *Memorial Markers.* Not more than two memorial markers may be installed to memorialize the deceased buried in a memorial garden plot. Memorial markers must be (a) (i) white or gray marble, (ii) natural gray granite, or (iii) slate, (b) flush to the ground, (c) not closer than six inches (6") to the boundary of a memorial garden plot, and (d) installed under the supervision of the Cemetery at the cost of the family or estate of the deceased.

Memorial markers shall be four inches (4") thick, and the combined surface area of memorial markers in any memorial garden plot shall not exceed four square feet.

Memorial markers may be of any shape.

Lettering on markers in memorial garden plots south of the center of the Memorial Garden shall face north, and lettering on markers in plots north of the center shall face south.

The Trustees may grant exceptions to these guidelines on a case-by-case basis.

40. *Order of Sale of Memorial Garden Plots.* Burial rights in memorial garden plots will be sold in the order determined by the Trustees.
41. *Lawn Maintenance.* Lawn maintenance will include periodically cutting back the grass which grows over the memorial markers.

III. Financial Issues

42. *Funding the Future of the Cemetery.* Because the income from the sale of burial plots does not cover the cost of maintaining the Cemetery and ensuring its beauty for years to come, Pine Grove Cemetery Association needs and solicits contributions from plot owners and friends of the Cemetery. Contributions may be used to cover current operating expenses, capital improvements or the Cemetery's endowment.

43. *Prices of Burial Rights.* The prices for the purchase of burial rights in different plots are set forth below:

Plot	Price
Standard Burial Plot	\$1,500
Field Section Plot	\$3,000
Memorial Garden Plot	\$600
Plots of irregular dimension	As determined by the Trustees

The Trustees may change these prices from time to time.

44. *Overall Costs to the Purchaser of Burial Rights.* The overall costs to a purchaser of burial rights include:

- a. The cost for the purchase of burial rights,
- b. The cost for the installation of cornerstones in plots in the Burial Sections,
- c. The burial fee payable to the Association under the Burial Procedures,
- d. The cost of grave preparation and closure payable under the Burial Procedures,
- e. The cost of monuments, gravestones, and memorial markers, and
- f. Voluntary bequests/contributions to the Association from time to time.

PINE GROVE CEMETERY ASSOCIATION
P.O. Box 654
Sheffield, MA 01257

BURIAL DEED

Date:

This certifies that

(Complete per paragraph 7 of the
2018 Plan for Additional Burial Space)

is/are entitled to burial in plot(s) # ___ in Pine Grove Cemetery on Bow Wow Road in Sheffield, Massachusetts. These burial rights are personal to the individual(s) above named, and no person may transfer his or her rights unless consented to in writing by an authorized representative of Pine Grove Cemetery Association. These burial rights do not include perpetual care, which is not provided at the Cemetery. All burials shall be in accordance with the laws of the Commonwealth of Massachusetts and the Burial Procedures of Pine Grove Cemetery Association in effect from time to time. These rights and the maintenance of such plot(s) in Pine Grove Cemetery are also subject to the Rules and Regulations of Pine Grove Cemetery Association and the 2018 Plan for Additional Burial Space, both as in effect from time to time. The Purchaser acknowledges receipt of the documents listed below and made a part hereof and that the 2018 Plan for Additional Burial Space, the Burial Procedures, the Rules and Regulations and the By-laws of Pine Grove Cemetery Association may be amended from time to time.

Signed _____

On behalf of the
Pine Grove Cemetery Association

Signed _____, as Purchaser

Name of Purchaser:
Mailing Address:
Phone Number:
E-mail Address:

Documents:

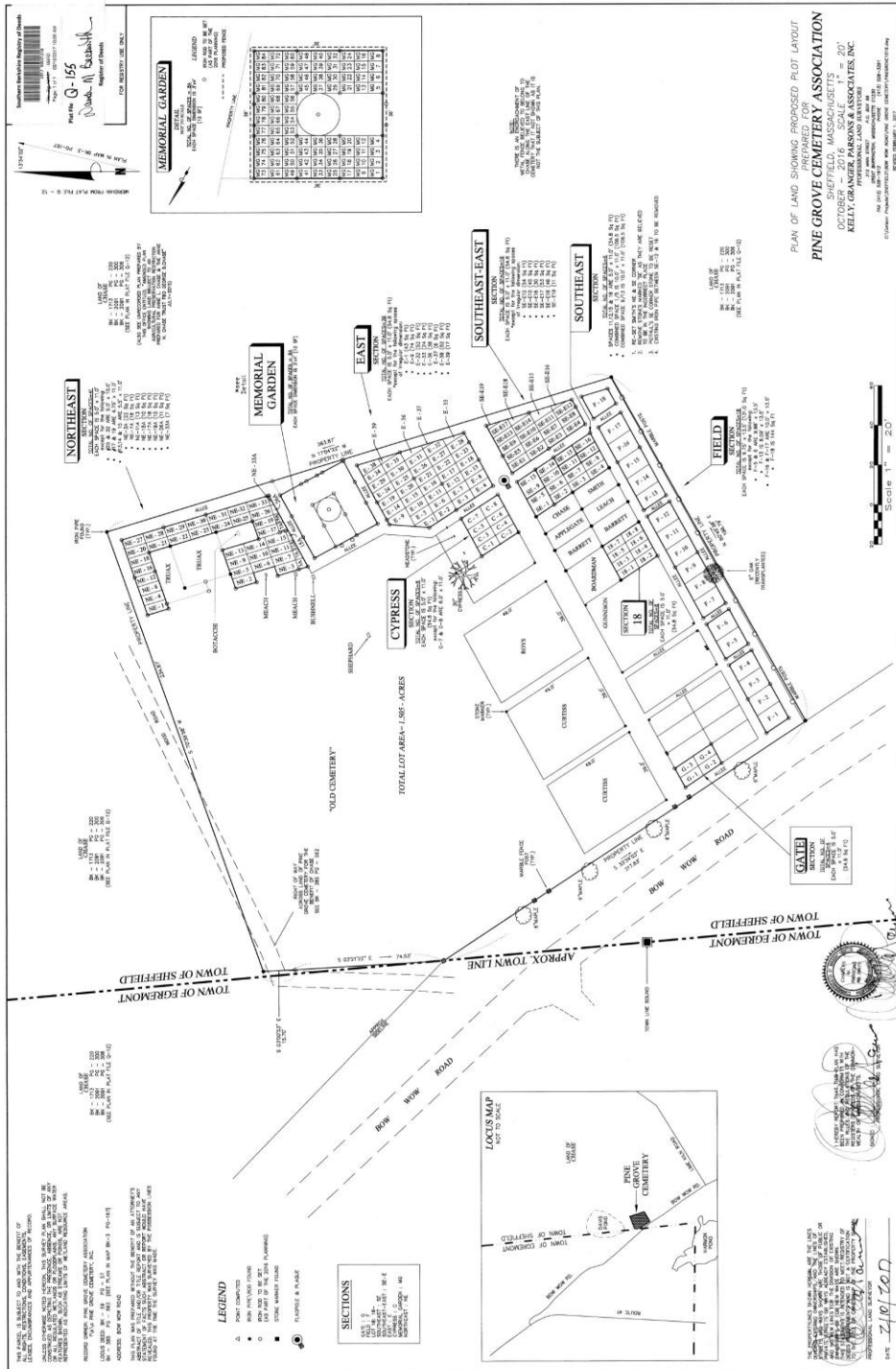
1. Locus Map of Pine Grove Cemetery and map of a portion of the Cemetery showing the location of the above plot(s).
2. Burial Procedures of Pine Grove Cemetery Association in effect on the date hereof.
3. Rules and Regulations of Pine Grove Cemetery Association in effect on the date hereof
4. Document titled Funding the Future of the Cemetery.

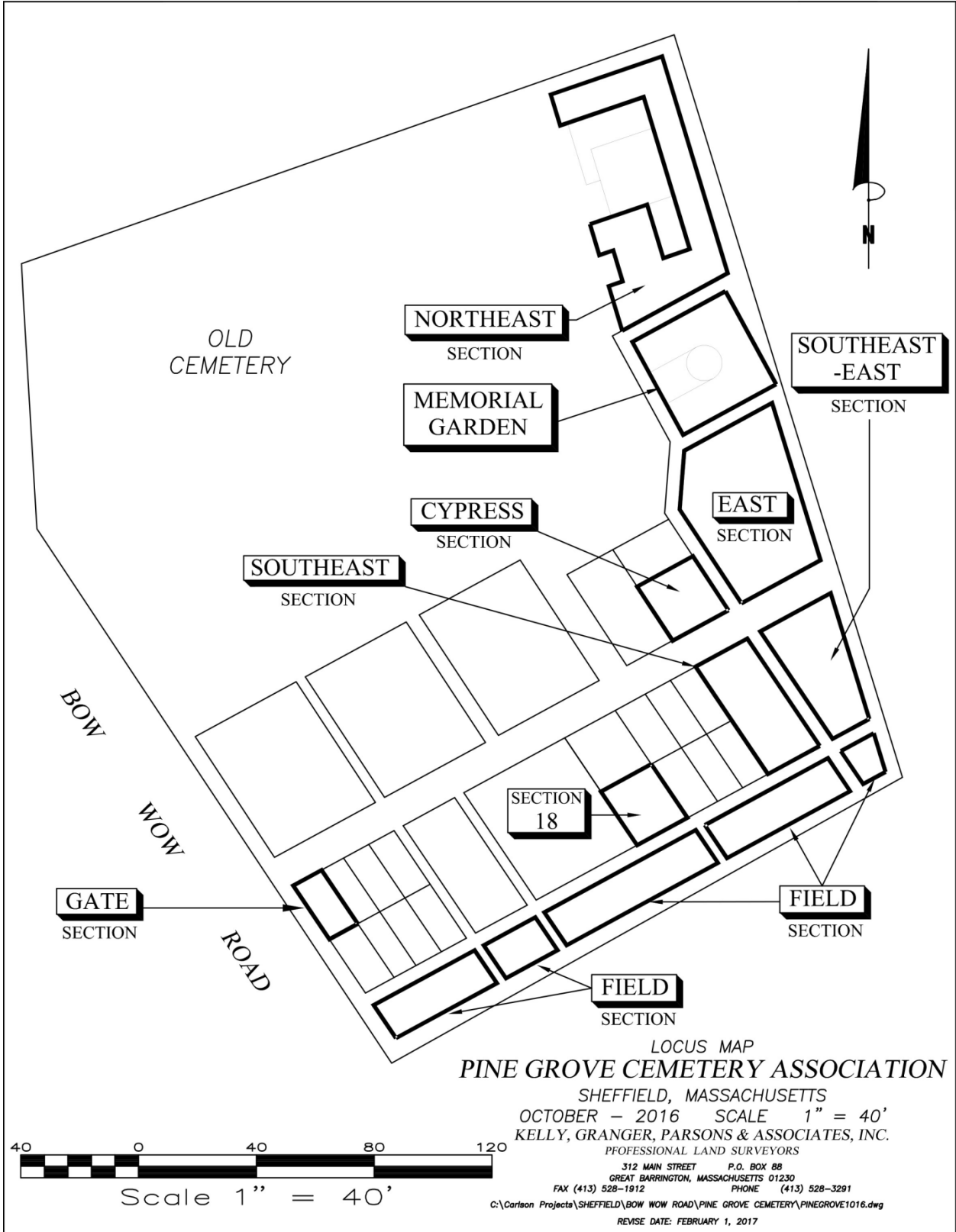
PINE GROVE CEMETERY

Bow Wow Road, Sheffield, MA

Maps for Plan for Additional Burial Space

1. Whole Cemetery Showing Proposed Plot Layout
2. Locus Map Showing New Burial Areas
3. Gate Section
4. Field Section
5. Section 18
6. Southeast Section
7. Southeast-East Section
8. Cypress Section
9. East Section
10. Northeast Section
11. Memorial Garden





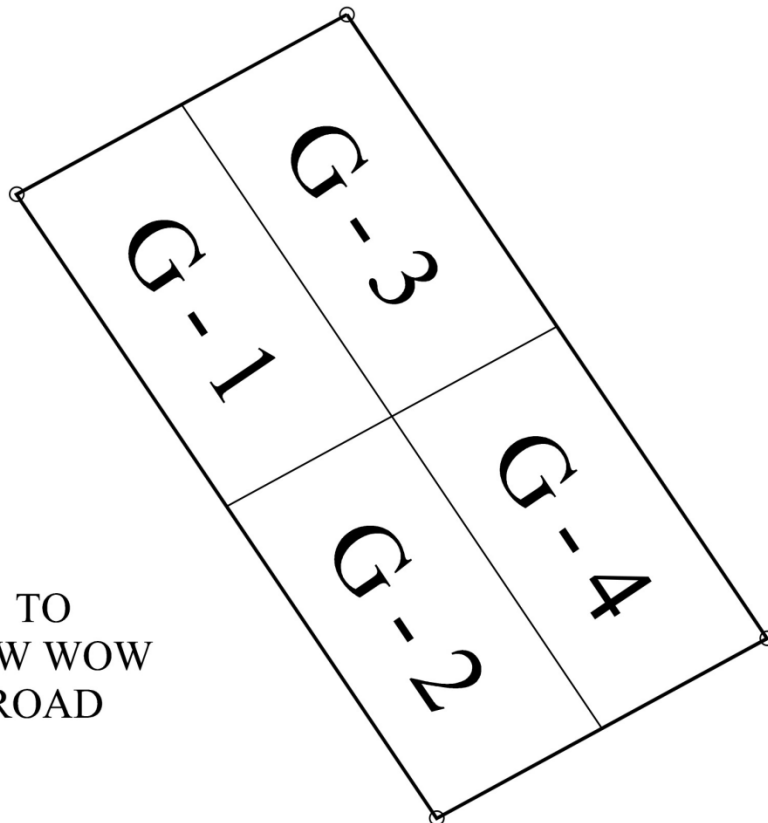
LEGEND

○ IRON ROD TO BE SET
(AS PART OF THE 2016 PLANNING)

GATE

SECTION

TOTAL NO. OF
SPACES=4
EACH SPACE IS 5.0'
x 11.0'
(54.8 Sq Ft)



← TO
BOW WOW
ROAD

**PLAN OF GATE SECTION
PINE GROVE CEMETERY ASSOCIATION**

SHEFFIELD, MASSACHUSETTS

OCTOBER – 2016

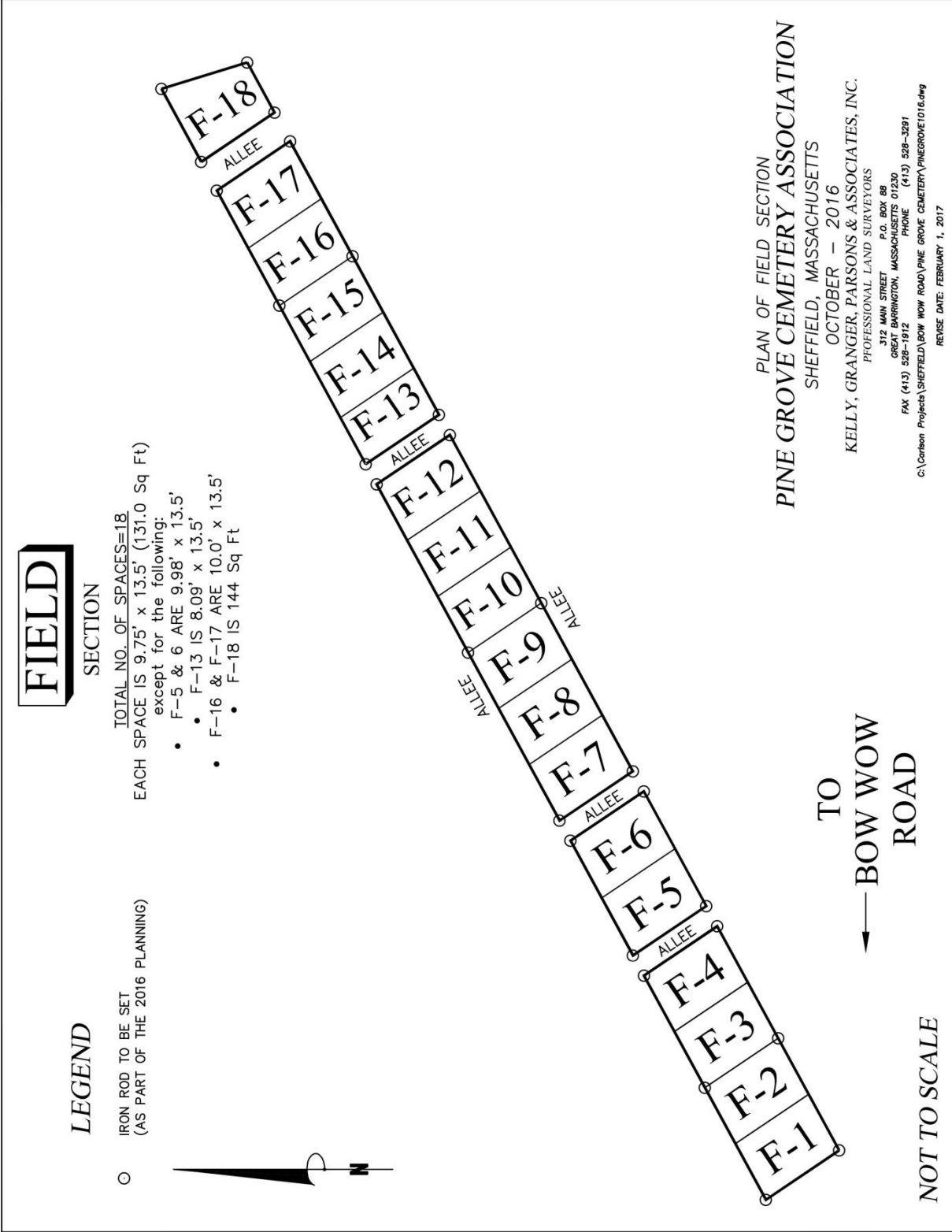
KELLY, GRANGER, PARSONS & ASSOCIATES, INC.

PROFESSIONAL LAND SURVEYORS

312 MAIN STREET P.O. BOX 88
GREAT BARRINGTON, MASSACHUSETTS 01230
FAX (413) 528-1912 PHONE (413) 528-3291

C:\Carlson Projects\SHEFFIELD\BOW WOW ROAD\PINE GROVE CEMETERY\PINEGROVE1016.dwg
REVISE DATE: FEBRUARY 1, 2017

NOT TO SCALE

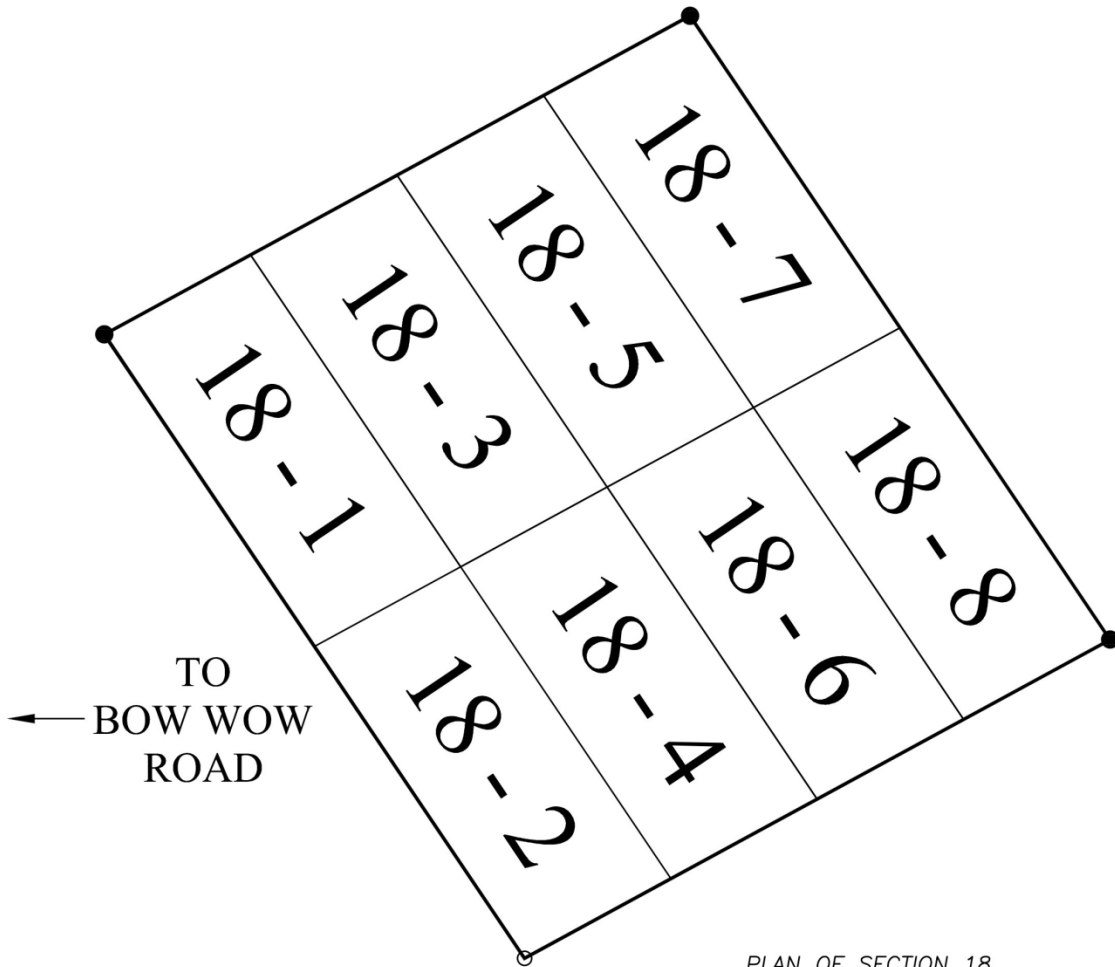


LEGEND

- IRON ROD TO BE SET
(AS PART OF THE 2016 PLANNING)
- IRON PIPE FOUND

**SECTION
18**

TOTAL NO. OF SPACES=8
EACH SPACE IS 5.0' x 11.0'
(54.8 Sq Ft)



TO
← BOW WOW
ROAD

PLAN OF SECTION 18
PINE GROVE CEMETERY ASSOCIATION
SHEFFIELD, MASSACHUSETTS
OCTOBER - 2016

KELLY, GRANGER, PARSONS & ASSOCIATES, INC.
PROFESSIONAL LAND SURVEYORS

312 MAIN STREET P.O. BOX 88
GREAT BARRINGTON, MASSACHUSETTS 01230
FAX (413) 528-1912 PHONE (413) 528-3291

NOT TO SCALE

C:\Carlson Projects\SHEFFIELD\BOW WOW ROAD\PINE GROVE CEMETERY\PINEGROVE1016.dwg
REVISE DATE: FEBRUARY 1, 2017

SOUTHEAST

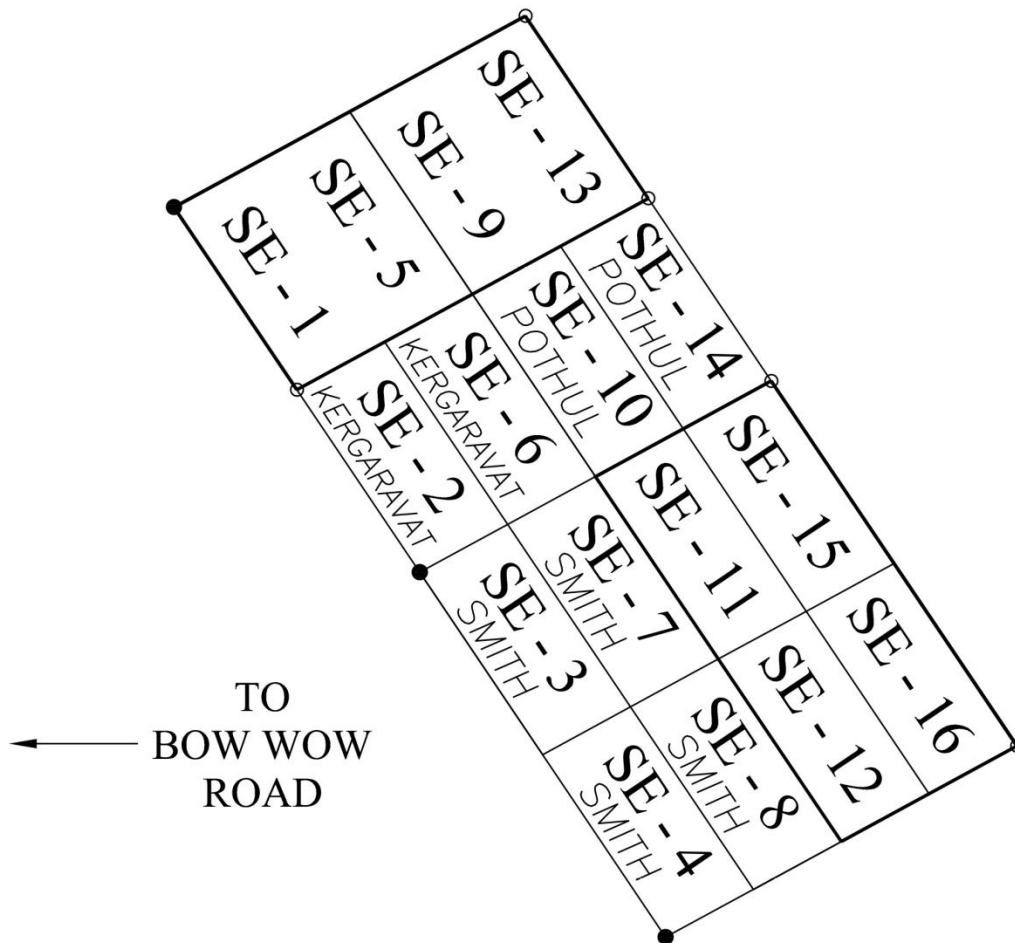
LEGEND

- IRON ROD TO BE SET
(AS PART OF THE 2016 PLANNING)
- IRON PIPE FOUND

SECTION

TOTAL NO. OF SPACES=16

- EACH SPACE IS 5.0' x 11.0' (54.8 Sq Ft)
- COMBINED SPACE 1/5 IS 10.0' x 11.0' (109.5 Sq Ft)
- COMBINED SPACE 9/13 IS 10.0' x 11.0' (109.5 Sq Ft)



PLAN OF SOUTHEAST SECTION PINE GROVE CEMETERY ASSOCIATION

SHEFFIELD, MASSACHUSETTS
OCTOBER - 2016
KELLY, GRANGER, PARSONS & ASSOCIATES, INC.
PROFESSIONAL LAND SURVEYORS

312 MAIN STREET P.O. BOX 88
GREAT BARRINGTON, MASSACHUSETTS 01230
FAX (413) 528-1912 PHONE (413) 528-3291

REVISE DATE: FEBRUARY 1, 2017

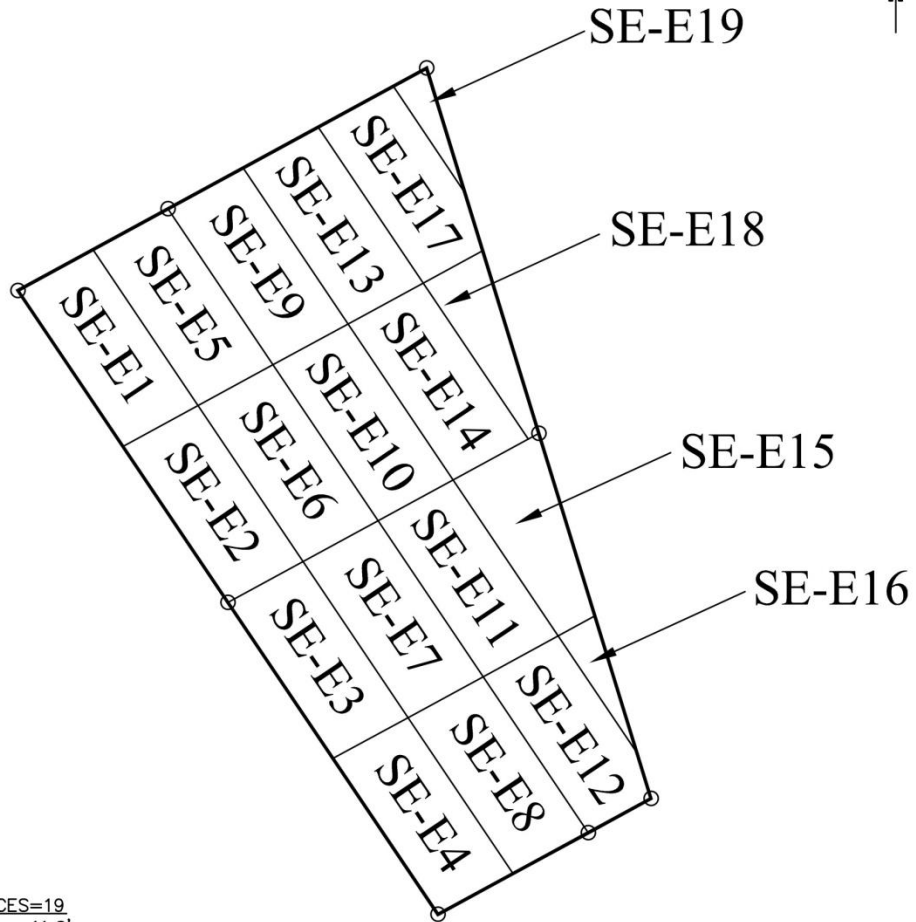
NOT TO SCALE

SOUTHEAST-EAST

LEGEND

- IRON ROD TO BE SET
(AS PART OF THE 2016 PLANNING)

SECTION



TOTAL NO. OF SPACES=19
EACH SPACE IS 5.0' x 11.0'
(54.8 Sq Ft)

*except for the following
spaces
of irregular dimension:

- SE-E12 (54 Sq Ft)
- SE-E15 (45 Sq Ft)
- SE-E16 (30 Sq Ft)
- SE-E17 (53 Sq Ft)
- SE-E18 (46 Sq Ft)
- SE-E19 (11 Sq Ft)

NOT TO SCALE

PLAN OF SOUTHEAST-EAST SECTION PINE GROVE CEMETERY ASSOCIATION

SHEFFIELD, MASSACHUSETTS

OCTOBER - 2016

KELLY, GRANGER, PARSONS & ASSOCIATES, INC.

PROFESSIONAL LAND SURVEYORS

312 MAIN STREET P.O. BOX 88
GREAT BARRINGTON, MASSACHUSETTS 01230
FAX (413) 528-1912 PHONE (413) 528-3291

C:\Carlson Projects\SHEFFIELD\BOW WOW ROAD\PINE GROVE CEMETERY\PINEGROVE1016.dwg
REVISE DATE: FEBRUARY 1, 2017

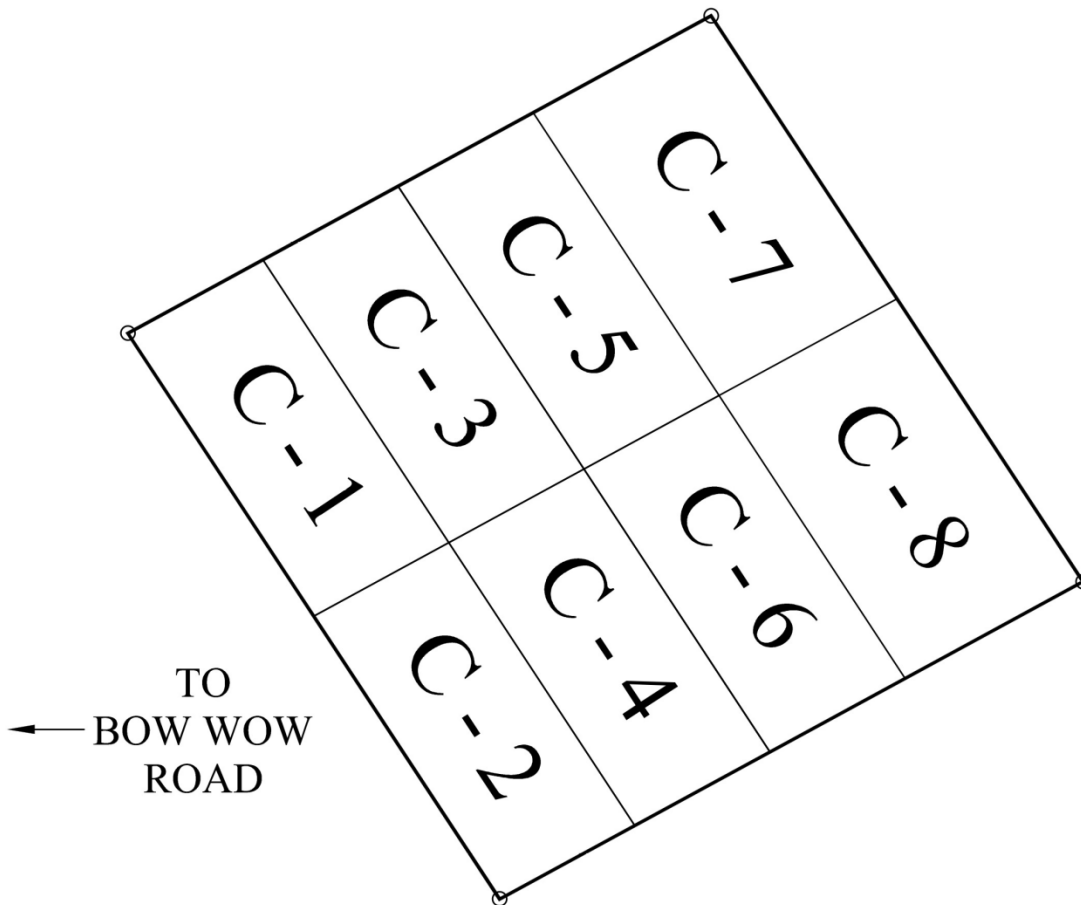
LEGEND

○ IRON ROD TO BE SET
(AS PART OF THE 2016 PLANNING)

CYPRESS

SECTION

TOTAL NO. OF SPACES=8
EACH SPACE IS 5.0' x 11.0'
(54.8 Sq Ft)
except for the following:
C-7 & C-8 ARE 6.0' x
11.0'



**PLAN OF CYPRESS SECTION
PINE GROVE CEMETERY ASSOCIATION**

SHEFFIELD, MASSACHUSETTS

OCTOBER - 2016

KELLY, GRANGER, PARSONS & ASSOCIATES, INC.

PROFESSIONAL LAND SURVEYORS

312 MAIN STREET P.O. BOX 88
GREAT BARRINGTON, MASSACHUSETTS 01230
FAX (413) 528-1912 PHONE (413) 528-3291

C:\Carlson Projects\SHEFFIELD\BOW WOW ROAD\PINE GROVE CEMETERY\PINEGROVE1016.dwg

REVISE DATE: FEBRUARY 1, 2017

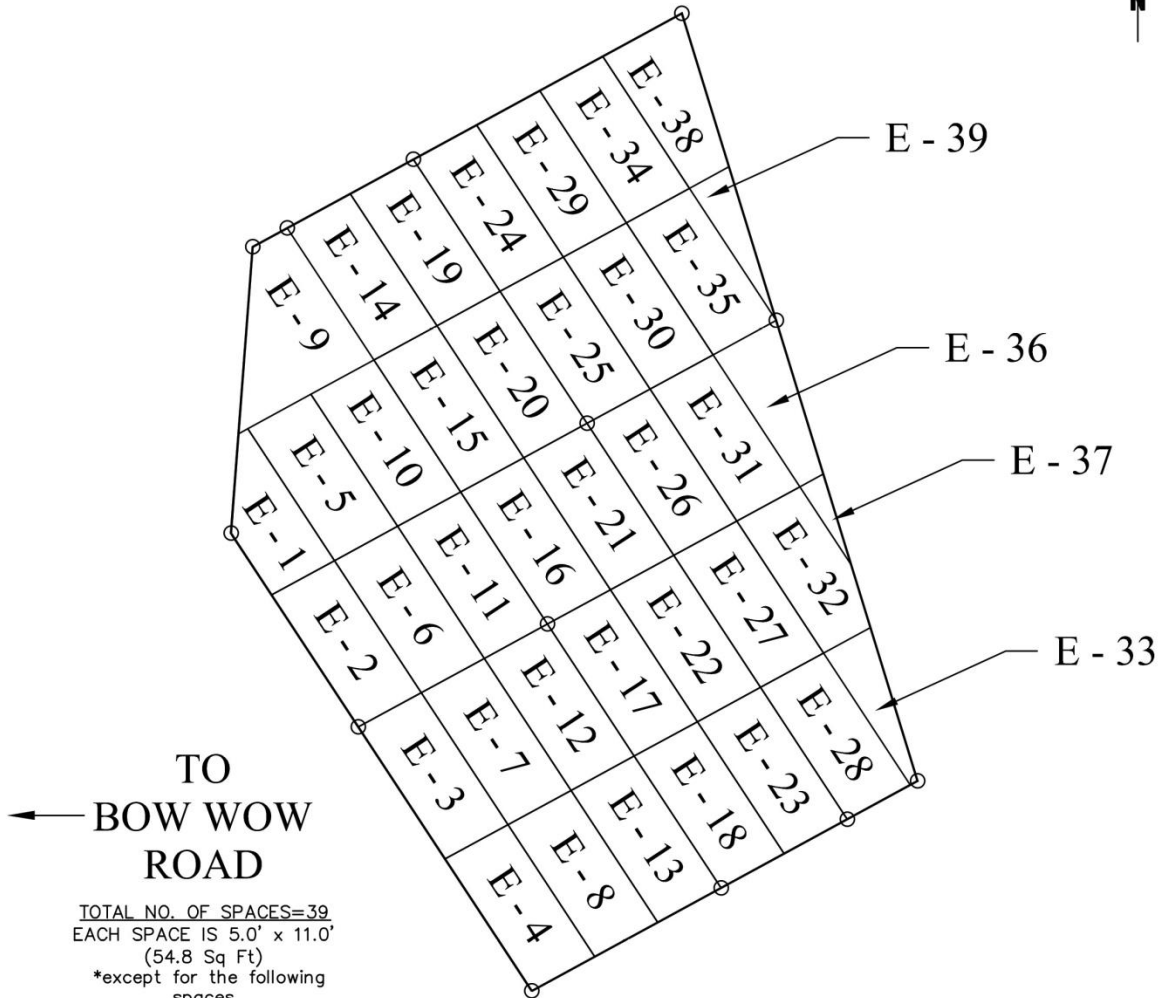
NOT TO SCALE

EAST

SECTION

LEGEND

- IRON ROD TO BE SET
(AS PART OF THE 2016 PLANNING)



TOTAL NO. OF SPACES=39
EACH SPACE IS 5.0' x 11.0'
(54.8 Sq Ft)

*except for the following
spaces

of irregular dimension:

- E-1 (43 Sq Ft)
- E-9 (74 Sq Ft)
- E-32 (52 Sq Ft)
- E-33 (24 Sq Ft)
- E-36 (38 Sq Ft)
- E-37 (6 Sq Ft)
- E-38 (52 Sq Ft)
- E-39 (17 Sq Ft)

NOT TO SCALE

PLAN OF EAST SECTION PINE GROVE CEMETERY ASSOCIATION

SHEFFIELD, MASSACHUSETTS

OCTOBER - 2016

KELLY, GRANGER, PARSONS & ASSOCIATES, INC.

PROFESSIONAL LAND SURVEYORS

312 MAIN STREET P.O. BOX 88

GREAT BARRINGTON, MASSACHUSETTS 01230

FAX (413) 528-1912 PHONE (413) 528-3291

C:\Carlson Projects\SHEFFIELD\BOW WOW ROAD\PINE GROVE CEMETERY\PINEGROVE1016.dwg

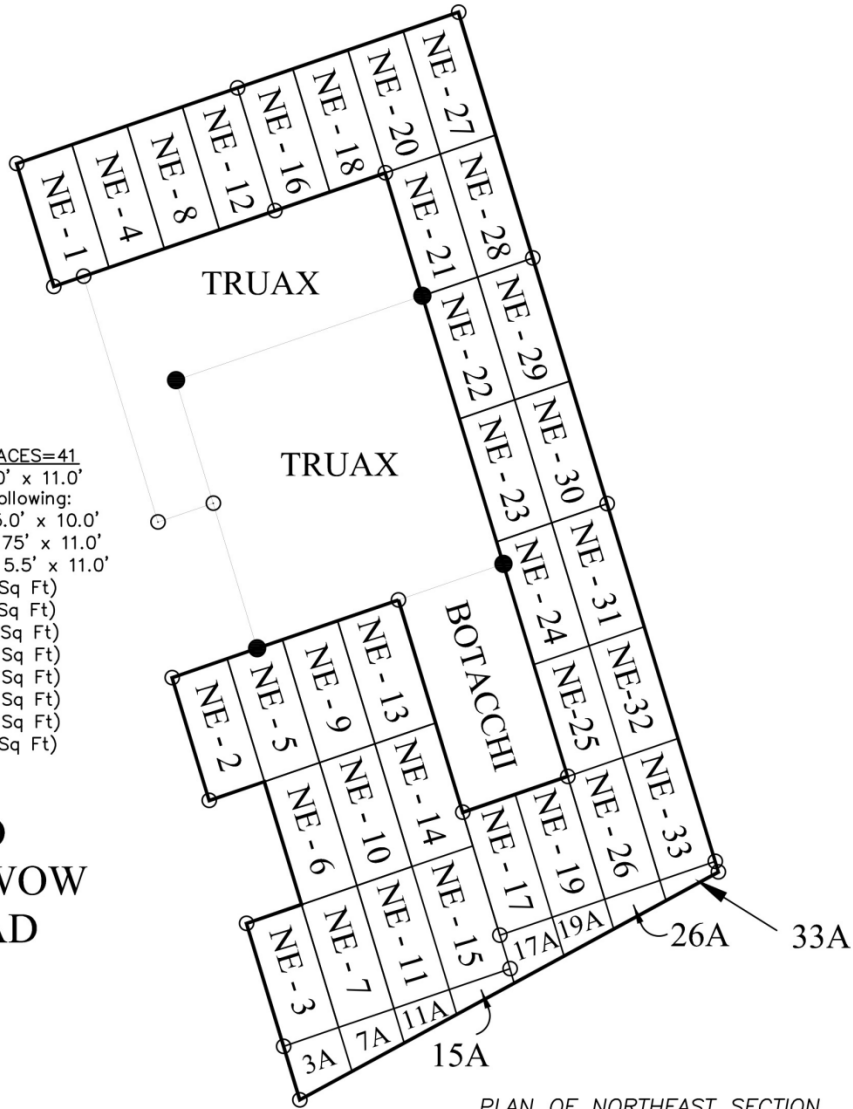
REVISE DATE: FEBRUARY 1, 2017

LEGEND

- IRON ROD TO BE SET
(AS PART OF THE 2016 PLANNING)
- IRON PIPE\ROD FOUND

NORTHEAST

SECTION



- TOTAL NO. OF SPACES=41
EACH SPACE IS 5.0' x 11.0'
except for the following:
- #25 & 32 ARE 5.0' x 10.0'
 - #17 & 19 ARE 4.75' x 11.0'
 - #13,14 & 15 ARE 5.5' x 11.0'
 - NE-3A (22 Sq Ft)
 - NE-7A (18 Sq Ft)
 - NE-11A (13 Sq Ft)
 - NE-15A (10 Sq Ft)
 - NE-17A (18 Sq Ft)
 - NE-19A (15 Sq Ft)
 - NE-26A (11 Sq Ft)
 - NE-33A (7 Sq Ft)

TO
← BOW WOW
ROAD

**PLAN OF NORTHEAST SECTION
PINE GROVE CEMETERY ASSOCIATION**

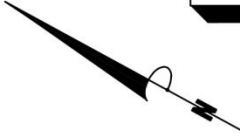
SHEFFIELD, MASSACHUSETTS
OCTOBER - 2016
KELLY, GRANGER, PARSONS & ASSOCIATES, INC.
PROFESSIONAL LAND SURVEYORS

312 MAIN STREET P.O. BOX 88
GREAT BARRINGTON, MASSACHUSETTS 01230
FAX (413) 528-1912 PHONE (413) 528-3291

C:\Carlson Projects\SHEFFIELD\BOW WOW ROAD\PINE GROVE CEMETERY\PINEGROVE1016.dwg
REVISE DATE: FEBRUARY 1, 2017

NOT TO SCALE

MEMORIAL GARDEN

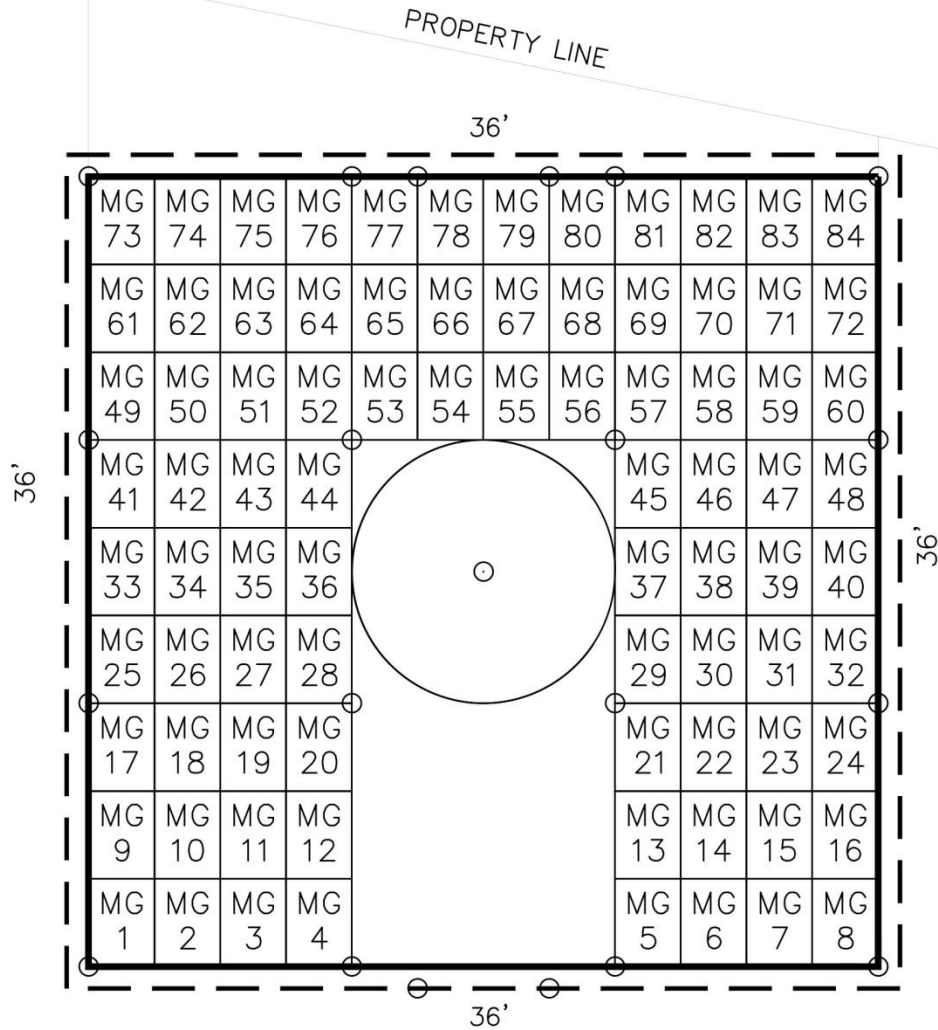


TOTAL NO. OF SPACES = 84
EACH SPACE DIMENSION IS
3'x4' [12 SF]

LEGEND

○ IRON ROD TO BE SET
(AS PART OF THE
2016 PLANNING)

--- PROPOSED FENCE



PINE GROVE CEMETERY ASSOCIATION

SHEFFIELD, MASSACHUSETTS

OCTOBER - 2016

KELLY, GRANGER, PARSONS & ASSOCIATES, INC.

PROFESSIONAL LAND SURVEYORS

312 MAIN STREET

P.O. BOX 88

GREAT BARRINGTON, MASSACHUSETTS 01230

FAX (413) 528-1912

PHONE (413) 528-3291

C:\Carlson Projects\SHEFFIELD\BOW WOW ROAD\PINE GROVE CEMETERY\PINEGROVE1016.dwg

REVISED FEBRUARY 1, 2017

NOT TO SCALE

